



## CASE STUDY: **THE HILL**



### **Luxury Apartment Complex Near Notre Dame University Utilizes Alta Labs**

The Hill is a new luxury apartment complex in South Bend, Indiana. Located just  $\frac{3}{4}$  of a mile away from Notre Dame University, the community offers high-end amenities such as a 24/7 fitness center, a podcast studio, indoor bike storage, a pet park and dog washing area, and study/gaming/conference areas.



*The Hill*

### **Making a Case For Alta Labs**

The building owner wanted to provide each tenant with a basic wireless internet package, as a value add for renting in the complex. The owner wanted to assure each tenant had the best possible coverage, could not see what the other tenants were doing on the network, nor see what other devices were connected to the network. The goal was to be able to offer higher connection speeds for tenants that were willing to pay for it.

The building owner also wanted to simplify management of the building's tenant turnover, wanted to be able to check in on the facility, and also wanted to make sure vacant apartments were not being heated and cooled unnecessarily. All from a distance.

The owner reached out to Alta Labs and CozyCloud IT to see what solutions could be provided. The project was awarded to CozyCloud IT and Alta Labs as soon as he realized all of the project requirements were exceeded by using Alta Labs products. The complex could utilize a single wireless network SSID with Alta Labs' patented AltaPass™ technology. Combining that with the seamless roaming functionality, tenants would have the ability to connect to their private network from anywhere within the complex.

**ALTA PASS™**  
MULTI-PASSWORD TECHNOLOGY

*"AltaPass was a big selling point. Allowing all of the residents to connect to one wireless network yet retain their privacy and custom network settings is a game-changer. Having the ability to capitalize on additional revenue opportunities from potential bandwidth upgrade packages put this solution over the top."*

- Griff Johnson, Public Development Partners



*AP6-Pro in Community Area*





## CASE STUDY: **THE HILL**



### Utilizing AltaPass Technology to Have the Equipment Pay for Itself

An AP6-Pro access point was installed inside of each apartment unit and wired back to an Alta Labs S24-POE switch on each floor. Additional AP6-Pro access points were placed in common areas and the gym to assure maximum coverage.

AltaPass was deployed throughout the entire complex allowing the use of a single wireless network SSID. Each tenant received a unique password when signing their lease agreement. This unique password is tied to the tenant and defines their bandwidth limitations and VLAN settings, so they are isolated to their own private and secure subnet.



*AP6-Pro Installed in Upper Right Above Entrance*



*Gym with Alta Labs AP6-Pro*

## ALTA PASS™

MULTI-PASSWORD TECHNOLOGY

|           |           |           |           |
|-----------|-----------|-----------|-----------|
| 📶 Apt 101 | 📶 Apt 201 | 📶 Apt 301 | 📶 Apt 401 |
| 📶 Apt 102 | 📶 Apt 202 | 📶 Apt 302 | 📶 Apt 402 |
| 📶 Apt 103 | 📶 Apt 203 | 📶 Apt 303 | 📶 Apt 403 |
| 📶 Apt 104 | 📶 Apt 204 | 📶 Apt 304 | 📶 Apt 404 |
| 📶 Apt 105 | 📶 Apt 205 | 📶 Apt 305 | 📶 Apt 405 |
| 📶 Apt 106 | 📶 Apt 206 | 📶 Apt 306 | 📶 Apt 406 |
| 📶 Apt 107 | 📶 Apt 207 | 📶 Apt 307 | 📶 Apt 407 |
| 📶 Apt 108 | 📶 Apt 208 | 📶 Apt 308 | 📶 Apt 408 |
| 📶 Apt 109 | 📶 Apt 209 | 📶 Apt 309 | 📶 Apt 409 |
| 📶 Apt 110 | 📶 Apt 210 | 📶 Apt 310 | 📶 Apt 410 |
| 📶 Apt 111 | 📶 Apt 211 | 📶 Apt 311 | 📶 Apt 411 |
| 📶 Apt 112 | 📶 Apt 212 | 📶 Apt 312 | 📶 Apt 412 |
| 📶 Apt 113 | 📶 Apt 213 | 📶 Apt 313 | 📶 Apt 413 |
| 📶 Apt 114 | 📶 Apt 214 | 📶 Apt 314 | 📶 Apt 414 |
| 📶 Apt 115 | 📶 Apt 215 | 📶 Apt 315 | 📶 Apt 415 |
| 📶 Apt 116 | 📶 Apt 216 | 📶 Apt 316 | 📶 Apt 416 |
| 📶 Apt 117 | 📶 Apt 217 | 📶 Apt 317 | 📶 Apt 417 |
| 📶 Apt 118 | 📶 Apt 218 | 📶 Apt 318 | 📶 Apt 418 |

📶 The Hill Apartments

For more on AltaPass, visit [www.alta.inc/altapass](http://www.alta.inc/altapass)





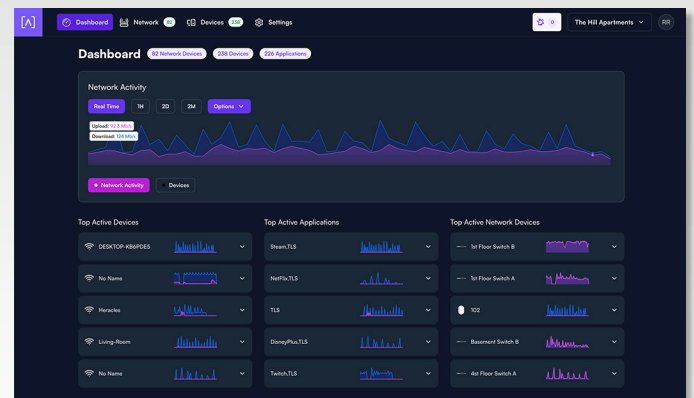
## CASE STUDY: THE HILL



AP6-Pro Installed in a Community Area

Homebase was chosen for their camera system as well as their WiFi enabled locks and thermostats. A unique password was also created for use by the Homebase devices that are connected via WiFi. The locks and thermostats join a private subnet with only access to the internet to report back to their private cloud infrastructure. A separate wired subnet was also created for the cameras, which are powered over Ethernet using Alta Labs S24-POE network switches.

Utilizing Alta Labs admin permission settings, the building owner can grant access to administrative assistants to change only certain AltaPass passwords, such as tenant passwords when there are new tenants. Utilizing Alta Labs cloud-based management platform, the building owner can check in on the network and make policy changes from another state.



The Hill Apartments Dashboard in Cloud Management Portal

*"Deploying and managing the Alta Labs solutions at The Hill has been surprisingly easy. I was thoroughly impressed with the features Alta Labs have deployed and how well their management interface works. All the feedback I have received so far from the residents is that the coverage and bandwidth has been exceptional. The Alta Labs solutions combined with our enterprise-grade fiber internet to the building has been a winning combination for everyone!"*

- Tim Jackson, CozyCloud IT

| The Hill Project Overview |   |
|---------------------------|---|
|                           | 69 Apartments   |
|                           | 5 Floors  |
|                           | 72 Passwords (Single SSID)  |
|                           | 73 Access Points  |
|                           | 8 Switches (S24-POE, connected to an aggregate switch using SFP+ Modules) |
|                           | 70 VLANs  |





## CASE STUDY: **THE HILL**



The basic WiFi package provides 50 Mbps download speed. Upgrade options are available for 100 Mbps and 250 Mbps. Revenue from the bandwidth upgrades create an engine to pay for the Alta Labs equipment installation over an 18 month period, rather than being a sunk capital expense.

| Speed    | Price          |
|----------|----------------|
| 50 Mbps  | \$50 Per Month |
| 100 Mbps | \$70 Per Month |
| 250 Mbps | \$90 Per Month |



*AP6-Pro Mounted on the Wall*

*"We have received zero complaints from the residents regarding the internet. Which, from a management company's perspective, is considered good news!"*

*- Carmen Davis, Bradley Company*



*AP6-Pro in Kitchen Area*



*Exterior Shot of The Hill Apartments*



## CASE STUDY: **THE HILL**



### For More Information

Visit the The Hill Apartments website at [www.thehillsouthbend.com](http://www.thehillsouthbend.com)

Visit the CozyCloud IT site at [cozycloudit.com](http://cozycloudit.com)

Visit the Public Development Partners at [publicdevelopment.com](http://publicdevelopment.com)

Visit our website for more case studies at [alta.inc/case-studies](http://alta.inc/case-studies)

Download the Alta Networks mobile app by clicking the appropriate button below



Alta Networks  
Utilities



192 N. Old Highway 91  
Hurricane, UT 84737  
[www.alta.inc](http://www.alta.inc)



© 2024 Soundvision Technologies. All rights reserved.  
Alta Labs is a trademark of Soundvision Technologies, LLC