



Popular UK Restaurant Pub Upgrades WiFi

Isaacs On The Quay, a popular restaurant pub in Ipswich, one of England’s oldest towns, contacted LinITX/Multithread to have them help improve their WiFi coverage. The business was concerned their existing setup was outdated and not providing an optimal experience to their customers. There were also specific dead spots on their property that they wanted to address.



Isaacs On The Quay



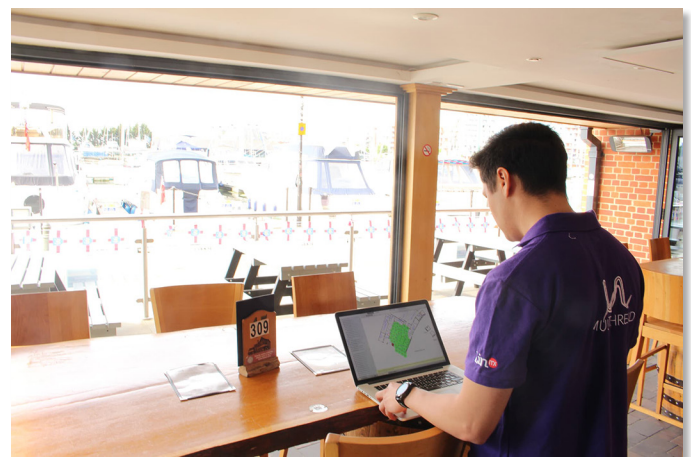
Kiln Bar at Isaacs On The Quay

LinITX/Multithread provided a full WiFi site survey of the location and inspection of their existing WiFi equipment. The equipment was definitely due for replacement as it was nearly a decade old. LinITX/Multithread proposed using Alta Labs AP6-Pro WiFi 6 access points to ensure maximum throughput, extensive area coverage, and support for a large number of concurrent users. Featuring advanced 4096-QAM modulation technology, the AP6-Pro offers significantly higher throughput over standard WiFi 6 access points. The AP6-Pro APs are also IP54 rated, offering protection against light water spray and dust particles.

About The Location

Located on the beautiful waterfront in historical Ipswich, the property features Grade I and Grade II buildings, some dating back to the medieval and Tudor eras, with the site’s origins dating back to 1430. The site features the following:

Isaacs On The Quay Overview			
31,000 sq' (2,900 m)	63 Rooms	3 Floors	7 Bars



Conducting a Site Survey

CASE STUDY: ISAACS ON THE QUAY



Installation

LinITX/Multithread installed 24 Alta Labs AP6-Pro WiFi 6 access points and configured 2 VLANs. After installation, a new site survey was conducted and it was obvious the WiFi coverage had improved significantly.

"We've not had the previous issues with deadspots and flakey WiFi coverage, since the new Alta Labs APs have been in place."

- Isaacs On The Quay Team Member

"Known deadspots are now covered and no longer an issue."

- Isaacs On The Quay Team Member



AP6-Pro Installed in the Merchant Bar



AP6-Pro Installed in the Coffee Tavern



AP6-Pro Installed in the Viking Bakehouse/Tiki Bar



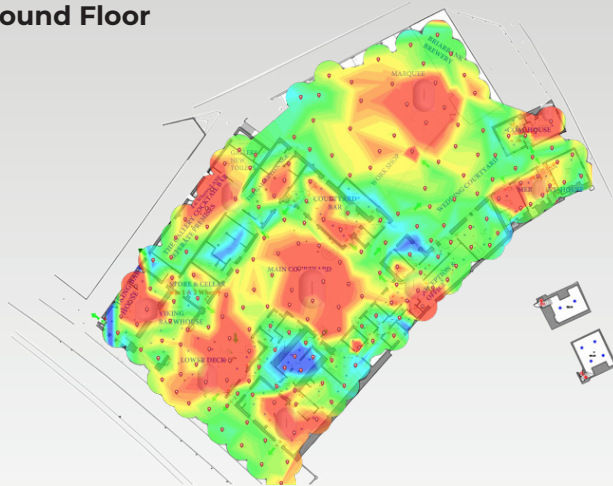
AP6-Pro Installed in the Top Bar

The site surveys are shown on the next page. WiFi signal strength has increased throughout the entire site. WiFi coverage on all three floors has been significantly improved.

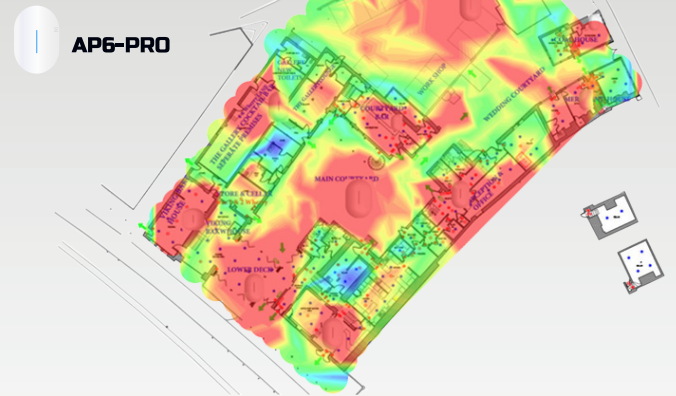


CASE STUDY: **ISAACS ON THE QUAY**

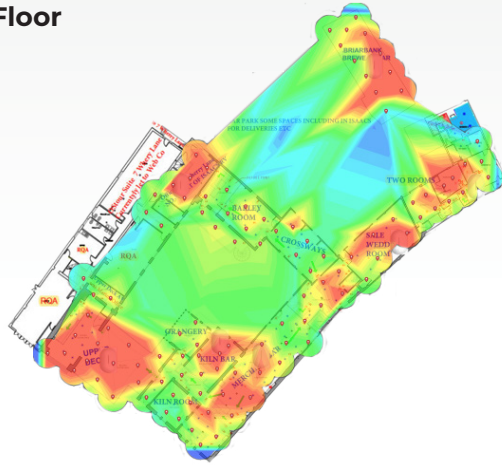
Before
Ground Floor



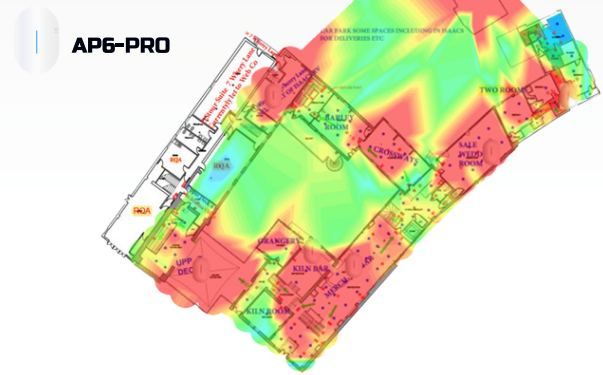
After
Ground Floor
10 Access Points



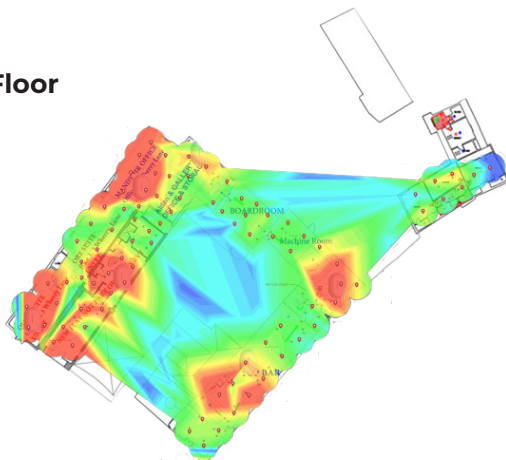
First Floor



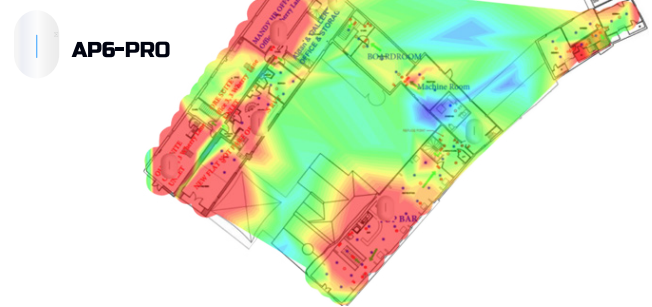
First Floor
7 Access Points



Second Floor



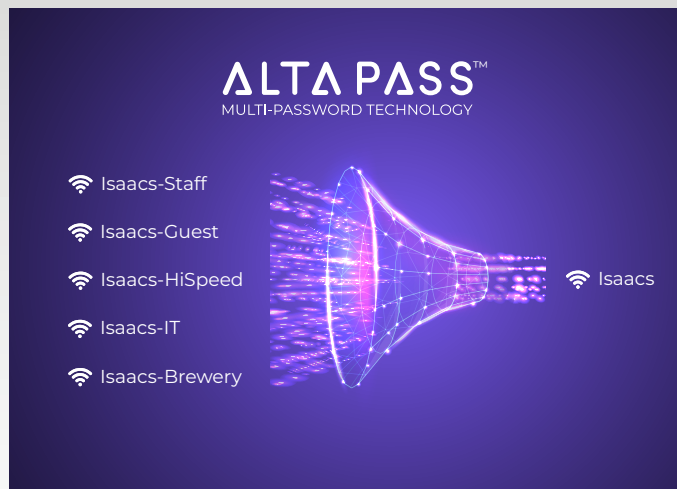
Second Floor
6 Access Points



Note: The 24th AP was a single AP installed on the mezzanine level. A site survey was not conducted there.



Utilizing AltaPass Multi-Password Technology



Isaacs on the Quay has utilized Alta Labs unique patent-pending AltaPass™ Multi-Password Technology. Instead of using multiple wireless network SSIDs to separate wireless traffic, users connect to one single SSID but are granted different access configurations based on the password they enter. Below are the 5 connections they're currently using under one network SSID.

Network Type	Usage	Speed
Standard	Staff	Unlimited
Guest	Isaacs' Guests	20 Mbps Up/Down
Guest	Isaacs' Business Guests	50 Mbps Up/Down
Standard	Hardware Devices	Unlimited
Guest	Brewery Guests	15 Mbps Up/Down

ALTA PASS™

MULTI-PASSWORD TECHNOLOGY



"We have found the Alta network easy to manage and reliable, especially the one SSID across our business."

- Aidan Coughlan, Owner, Isaacs On The Quay



Scanning Environment After Installation of Alta Labs APs



Site Survey on Patio



Isaacs On The Quay

Special Thanks

Special thanks to LinITX/Multithread for putting together this initial case study. Thanks to Gavin King Photography for providing the images.

For More Information

Visit the Isaac's On The Quay site at isaaclord.org

Visit the LinITX site at linitx.com

Visit the Multithread site at multithread.co.uk

Photos courtesy of Gavin King Photography
www.gavinkingphotography.co.uk

Original LinITX/Multithread case study:
[Part 1](#), [Part 2](#)

Visit our website for more case studies at alta.inc/case-studies