

BE MORE COMPLEX

CASE STUDY: BE MORE COMPLEX



Be More Complex Deploys AP6-Pros to Upgrade #1 Sports Complex to WiFi 6

The Be More Complex in St. George, Utah is multi-use facility that is home to a cheer coaching business, a roller skating rink, 4 NBA-sized basketball courts, a ninja warrior business/course, a private gym, a sports medicine practice, and a cafe. They wanted to replace their existing wireless network with a new WiFi 6 solution. They've had intermittent issues streaming music on their WiFi 5 network using UAP-HD APs.

Glitch Busters assessed the needs of the Be More Complex and recommended the deployment of AP6-Pro access points.

"The Alta Labs AP6-Pro is a WiFi 6 access point but with its utilization of 4K QAM, it's really utilizing one of the key features of WiFi 7. The sleek compact design of the APs also

makes these a no brainer for use in an environment such as this"

- Ronnie LeBaron, Owner, Glitch Busters

Site Overview

The number one sports complex in Southern Utah, the Be More Complex averages 150 connected devices during the week but the number grows to 500+ on the weekends and during tournaments.



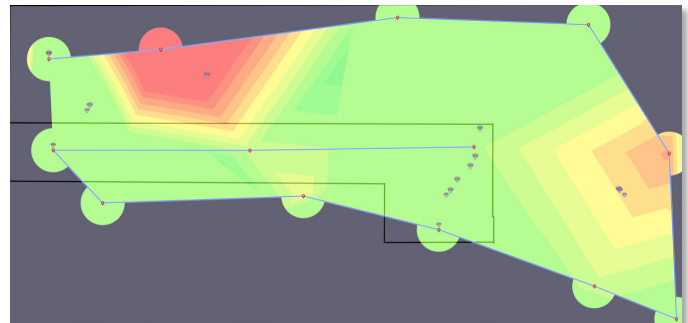
Installing the AP6-Pro at the Be More Sports Complex

"The AP6-Pros really are seamless to install with their QuickMount technology and simple setup in the Alta Labs management software"

- Ronnie LeBaron, Owner, Glitch Busters

Comprehensive Coverage

Twelve AP6-Pro access points were deployed at the Be More Complex. Post-deployment, a site survey was done verifying that every square inch of the complex had a signal strength of -65 dB or greater. Below is a sample excerpt.



Sample of Be More Complex AP6-Pro WiFi Coverage Map

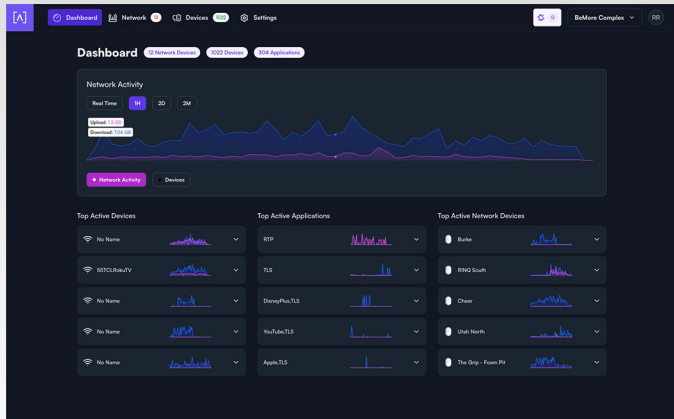
BE MORE COMPLEX

CASE STUDY: BE MORE COMPLEX



Alta Labs Management Software

The AP6-Pro deployment has resolved the music streaming issues the complex was encountering on their previous network.



Be More Dashboard in Alta Labs Management Software

The site admin has already taken advantage of some of the unique features in the Alta Labs management software. Our patent-pending Color Coding feature allows the separate businesses that operate within the complex to utilize a different color for their wireless network name (SSID). The interface also offers pre-defined network types that are being utilized: Large, IoT, and Guest.

Name	IP	SSID	Devices	Address	Version	Color	Status
Bunker	192.168.18.27	4.5	bc923988978	10u	1.0	Blue	OK
Clear	192.168.18.28	8.9	bc9239887ec	10u	1.0	Red	OK
IT	192.168.18.23	11.4	bc923988616	10u	1.0	Green	OK
Apexide	192.168.18.28	8.2	bc923988616	10u	1.0	Yellow	OK
Kitchen	192.168.11.198	0.7	bc923988634	10u	1.0	Purple	OK
BRNG North	192.168.11.198	9.1	bc923988654	10u	1.0	Orange	OK
BRNG South	192.168.11.197	16.1	bc923988644	10u	1.0	Light Blue	OK
The Grip - Fo...	192.168.18.22	6.6	bc923988648	10u	1.0	Dark Blue	OK
The Grip - Re...	192.168.18.21	8.7	bc923988789	10u	1.0	Light Green	OK
Urban North	192.168.18.25	22.1	bc92398865c	10u	1.0	Light Purple	OK

Be More Complex Utilizing Color Coding



AP6-Pro Installed Above The Gym at the Be More Complex



AP6-Pro Installed above the Basketball Courts

For More Information

Visit Glitch Busters at nomoreglitch.com

Visit The Be More Complex at bemorecomplex.org

Visit our website for more case studies at alta.inc/case-studies