

Why Alta Labs?



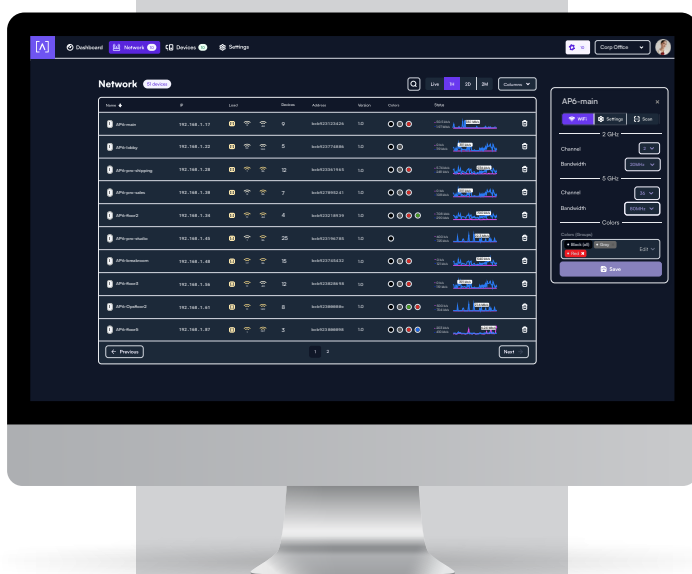
ALTA  
LABS

YOUR NETWORK, **ELEVATED**



Alta Labs is redefining how enterprise, business, and residential users connect to the world around them. We develop innovative technology that challenges the norm, provides unprecedented reliability, security, scalability, and is super easy to use.

Founded in 2022, Alta Labs revolutionary networking technology is driven by our proprietary software and hardware designs. We are led by industry professionals with extensive hardware design and software development experience. Our goal is to create accessible and intelligent products that make your network environment powerful and more reliable. Our commitment is to provide professional-grade products that make connecting and managing your network easier than ever. All of this is done with real people that want to help answer your questions about our products. We're here to help you deploy your next world-class network!



## Why Alta Labs?



We provide an incredibly reliable platform that offers innovative proprietary features but easy enough to use that anyone can deploy a world-class network



We have real sales, technical support, and marketing design resources available at no-cost



Alta Labs provides products with higher performance and reliability than our competitors



Alta Labs provides training videos and technical support to those that are installing our products



We provide a stronger margin structure with more protection than our competitors, for both our distribution, sub-distribution, and installation partners



# The Alta Labs Experience

Our products are designed for seamless installation with an easy-to-use management interface available on your mobile device, laptop, or desktop system. The Alta cloud management platform is designed for optimum scalability using a high-availability architecture for ultimate convenience and worldwide accessibility.

Many of our competitors charge recurring software licensing fees to use their basic management software. Our core management interface requires no licensing fees.

We pride ourselves on being available to our customers. We want our customers to know that we are real people that can be reached easily. We also have a wealth of resources available to our customers. Interact directly with our team online, via email, or by phone.

Visit our community forum for feature requests, suggestions, bug reports, or to chat with Alta engineers directly at [forum.alta.inc](https://forum.alta.inc)

Our help center provides the latest product documentation, videos, guides, and knowledge base articles at [help.alta.inc](https://help.alta.inc)

Check out our website at [alta.inc](https://alta.inc).



[A] ALTA  
LABS





## Business

Deploy Alta Labs products in business environments such as restaurants, coffee shops, sports bars, malls, hotels, and more. The Alta Labs management interface is simple enough for anyone to use but complex enough to meet the needs of any business environment. Using our proprietary **AltaPass™** Multi-Password Technology, your customers and employees can connect to the same wireless network SSID but are granted different levels of network access based on the password you provide them to login. Our management software includes **hotspot functionality**, allowing the creation of a custom local hotspot featuring a logo, title page, terms of service, and a final landing page. A hotspot can also be set up to redirect to an external URL.



## Commercial

Our AP6-Pro Access Point is **IP-54 rated**, providing superior protection from dust in a commercial environment. Built upon a **Qualcomm®** WiFi 6 networking platform, the AP6-Pro utilizes a **4x4 WiFi 6 configuration in the 5 GHz band**, delivering enhanced performance, range, and client capacity. Pair with our 16 and 24-port switches for the ultimate in performance.



## Education

**Scalable Multi-Site Management** in the Alta Labs management interface makes it easy to deploy and manage multiple campuses quickly and easily. Add, delete, or rename campuses instantly. Toggle between campuses from a site selection drop-down. Each campus contains its own data set. Our **DPI engine** provides advanced filtering, allowing the blocking of content by application, selectable from an extensive predefined list or block by domain name.

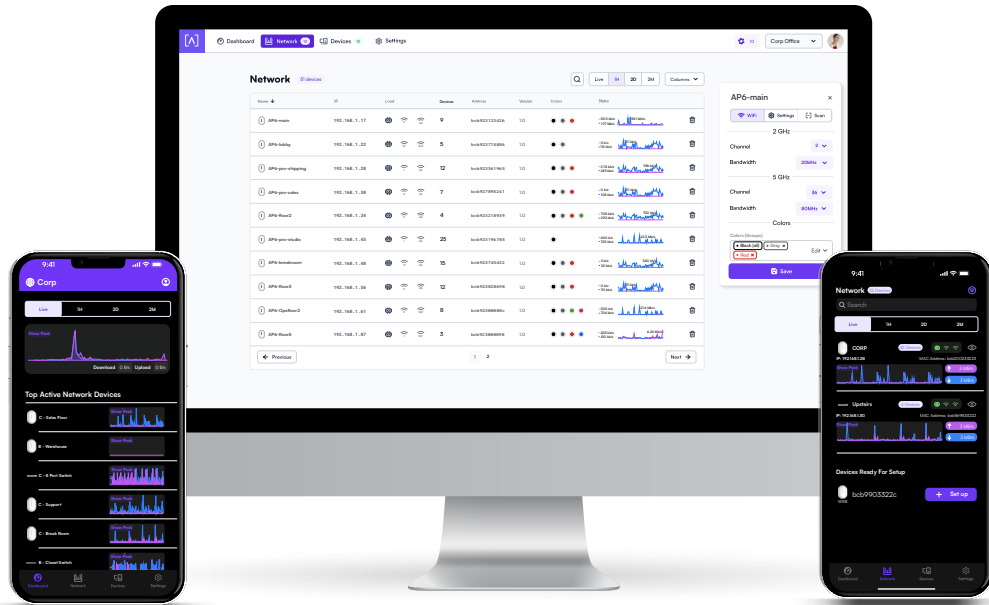


## Residential

The Alta cloud management platform is designed to be easy to use and can be conveniently used on a mobile device, laptop, or desktop computer. Monitor and manage your networks from the convenience of your mobile device using the Alta Networks app. Sign up for an Alta Labs account using just your name, email, and password or sign in using your Google or Apple account. Our access points are designed to be scalable, a single AP can cover a smaller home, while several APs can be used in a larger residence with **seamless roaming**.

# Alta Labs Products

We're excited to share our initial product offerings, but please keep in mind that these products are only the beginning! We look forward to bringing you more products in the future.



## Alta Labs Cloud Management Platform

- **Scalable Multi-Site Management:** Deploy and manage multiple sites quickly and easily. Each site contains its own data set.
- **Mobile App:** Monitor and manage your networks from the convenience of your mobile device.
- **Customizable Dashboard:** Customize your dashboard with the info you want.
- **Device Cards:** View connection details and configure your access points or client connections by clicking the device icon.
- **Wireless Network Color Coding:** Patent pending functionality that allows you to assign color groups to wireless SSIDs and use them to assign membership to wireless access points.
- **Status Snapshots:** View a visual timeline on the dashboard for each access point.
- **AltaPass Multi-Password Technology:** Allows all clients to connect to the same wireless network SSID but provides them with different access levels dependent upon the password they are provided to login.
- **Dark Mode:** Match your system theme, use a light theme, or to select a dark theme for the interface.
- **Site Manager:** Provides an overview of all sites, displays the number of devices for each site, and shows when updates are needed. Easily add new sites.
- **DPI Engine:** Advanced filtering to block content by application or domain.
- **Hotspot Functionality:** Create your own local hotspot with a logo, title page, terms of service, and a final landing page or redirect to an external URL.
- **On-The-Fly Changes and Scanning:** Make changes without taking your network down. Also scan your AP environment without disrupting WiFi.
- **Global Cloud Infrastructure:** Built on a worldwide content delivery network to optimize response and latency globally.
- **SSID Broadcasting Flexibility:** In addition to hiding your SSID, you can continue broadcasting your SSID during a “scheduled off” event. This provides network admins with the ability to grant users additional time on the network.

## AP6-Pro Access Point



- **WiFi 6 With WiFi 7 Benefits:** Built on an innovative new dual-band, 6 stream, WiFi 6 networking platform from Qualcomm®, the AP6-Pro incorporates 4096 QAM, a primary feature of WiFi 7, providing a combined 6.3 Gbps of WiFi capacity.
- **Superior Range and Performance:** Our proprietary antenna design provides superior range and performance. The AP6-Pro features four 5 GHz antennas, a design that helps the AP6-Pro outperform 2x2 APs by an over 30% throughput increase in many cases.
- **IP54 Rated:** The AP6-Pro is IP54 rated, offering strong protection against solids such as dust in a commercial environment, and a limited level of water spray resistance.

## AP6 Access Point



- **Superior Range and Performance:** Our proprietary antenna design provides superior range and performance. Engineered by a team with extensive WiFi design expertise, the AP6 provides seamless roaming and advanced traffic management to ensure a superior WiFi experience.
- **High Performance WiFi 6:** Built on Qualcomm's dual-band, 4-stream WiFi 6 networking platform, the AP6 delivers optimal 2.4 GHz and 5 GHz WiFi 6 performance.

## S24-PoE Switch



- **Rackmountable 24-Port Switch:** The S24-PoE has twenty-four 10/100/1000 ports.
- **Power Over Ethernet:** Sixteen of the ports offer 802.3at PoE+ functionality with a PoE budget of up to 240 Watts.
- **SFP+ Connectivity:** The S24-PoE includes two SFP+ ports providing 1, 2.5, 5, or 10 Gbps connectivity.
- **Bluetooth:** Seamless setup via Bluetooth and Alta Management Interface.

## S16-PoE Switch



- **Rackmountable 16-Port Switch:** The S16-PoE has sixteen 10/100/1000 ports.
- **Power Over Ethernet:** Eight of the ports offer 802.3at PoE+ functionality with a PoE budget of up to 120 Watts.
- **SFP Connectivity:** The S16-PoE includes two SFP ports providing 1000 Mbps connectivity.
- **Bluetooth:** Seamless setup via Bluetooth and Alta Management Interface.

## S8-PoE Switch



- **Compact 8-Port Switch:** The S8-PoE has eight 10/100/1000 ports. It has a compact form factor that can be mounted on a wall or placed on a desktop.
- **Power Over Ethernet:** Four of the ports offer 802.3at PoE+ functionality with a PoE budget of up to 60 Watts.
- **Bluetooth:** Seamless setup via Bluetooth and Alta Management Interface.